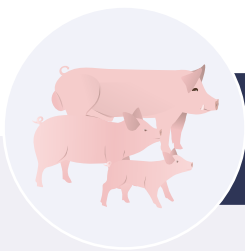


This work was carried out by experts on pig welfare and livestock farming practices in France and is based on the EFSA scientific opinion *Welfare of Pigs on Farm*



2

PIGLETS, REARING PIGS AND BOARS

Priority areas
for action to improve welfare

PRE-WEANERS



Protect against crushing

- > Monitor farrowing
- > Provide a designated area for piglets at the right temperature for them to be comfortable



End early weaning

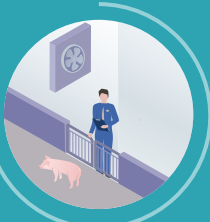
- > Choose a system where weaning is carried out at 28 days

WEANERS AND REARING PIGS



Improve use of space

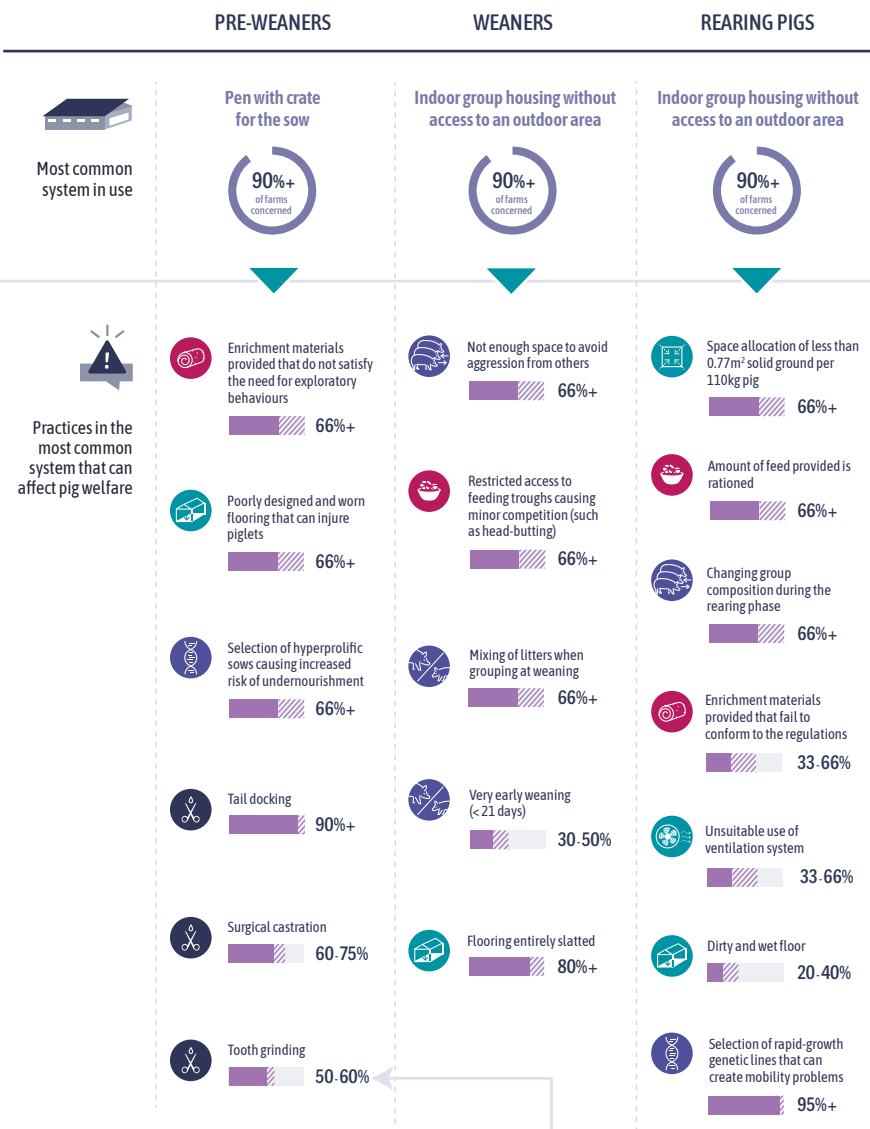
- > Provide more room for group-housed animals
- > Provide more enrichment materials of a suitable type



Monitor and prevent health problems

- > Limit transfers between groups and regrouping
- > Maintain good environmental conditions in the buildings (appropriate ventilation and clean pens)
- > Monitor the health of the animals

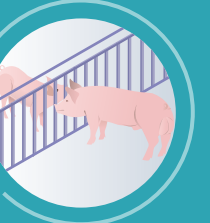
Occurrence (%) of the most common farming practices
in France that can be harmful to pig welfare



The bar shows that 50 to 60% of French farms that keep unweaned piglets in pens with crate for the mother practise 'tooth grinding', according to the expert panel.

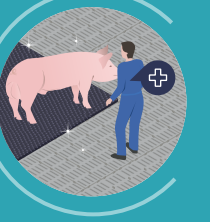
Priority areas
for action to improve welfare

TEASER BOARS (whose presence is used for heat detection and stimulation in sows)



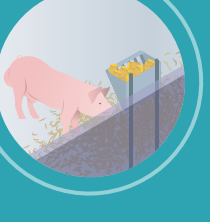
Stop keeping boars completely isolated

- > Allow individuals to smell, see and touch each other



Improve management of health risks

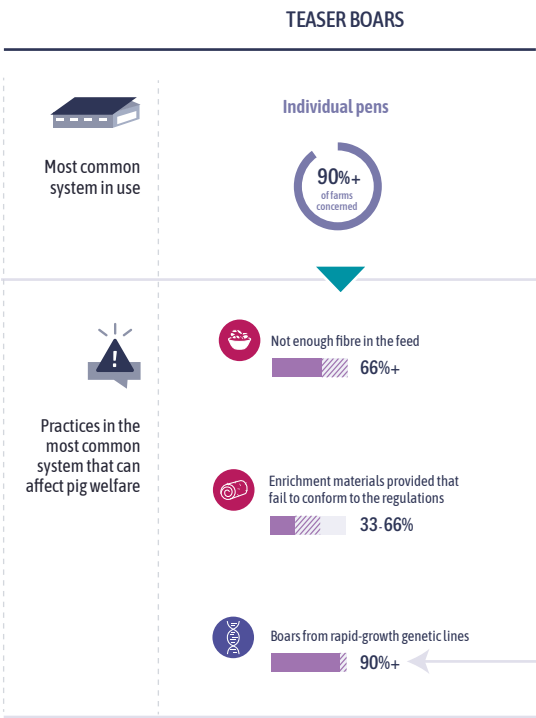
- > Carry out vaccinations at the correct times



Improve management of space

- > Provide larger pens for boars
- > Provide more appropriate enrichment materials

Occurrence (%) of the most common farming practices
in France that can be a risk to pig welfare



The bar shows that more than 90% of French farms that keep boars in individual pens practise the selection of boars from 'rapid-growth genetic lines', according to the expert panel.

PLEASE NOTE

Percentages relating to livestock systems and practices that can represent a risk to pig welfare in France have been provided by the expert panel consulted by the FRCAW. They are based on the panel's knowledge of current practice and the inspections they have carried out. Only potentially harmful practices considered by the experts to be present on more than 20% of French farms are shown here, for ease of reading. In formulating the priority areas for action to improve pig welfare in France, the FRCAW experts have drawn, in particular, on the occurrence figures (%) provided by the expert panel, but have also taken account of their additional experience on the ground. Priority actions specifically targeted at pre-weaners assume that piglets will in future be raised in free farrowing systems.

USEFUL LINKS

The priority areas for improvement were selected by the expert panel based, in particular, on the recommendations set out in the EFSA opinion on the welfare of pigs on farm:

[Go to the EFSA opinion](#)

The full FRCAW report including other areas for action is available here:

[Go to the FRCAW report \(in French\)](#)